

CDS BASKET

General Installation Instructions



- These are generic instructions for the installation of Draffin Street Furniture's CDS Basket.
- These instructions do not cover the installation of bin surrounds. Please see instructions specific to your bin surround.
- These instructions do not apply to ground fixings, wall fixings or other items outside the control of Draffin Street Furniture. These items are the responsibility of the installer.
- Further information is available by contacting Draffin Street Furniture (www.draffin.com.au) via the following QR code:



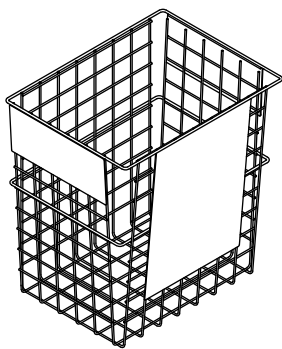
Draffin Street Furniture Website

- General product and contact information

Part Numbers:

- Mild steel basket, SS Fasteners: 34579/MSS
- Mild steel basket, MS Fasteners: 34579/MMS
- Stainless steel basket, SS Fasteners: 34579/SSS
- Stainless steel basket, MS Fasteners: 34579/SMS

34597 Kit Contents:



DRAFFIN SF CDS BASKET
P/N: 34596
QTY: 1

Required Tools:

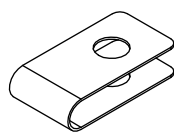
- Impact driver or equivalent.
- Masking tape or equivalent.
- Measuring tape.
- Spirit Level.
- Drill and Ø3.5mm bit. (See final note on next page).

Notes:

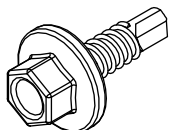
The base material of the bin surround dictates the fastener material.

- A Stainless Steel (SS) bin surround requires Stainless Steel fasteners.
- A Mild Steel (MS) bin surround requires Zinc Plate Mild Steel fasteners.

Hardware kit:



Wire Clip (SS OR ZP)
P/N:34580ZP or
34580SS
QTY: 4

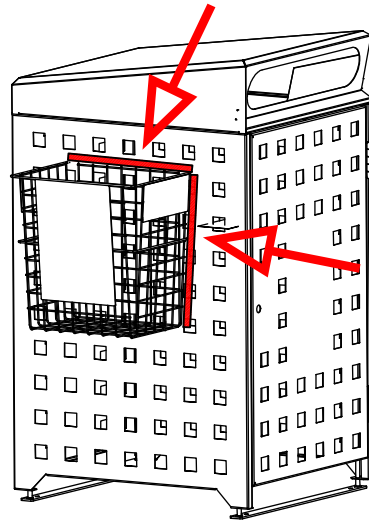


12g X 20 Tek Screw (SS OR ZP)
P/N:TEKH12X20ZP (ZINC PLATED) or,
TEKH12X20SS (STAINLESS)
QTY: 4

Attach Basket To Bin Surround

Determine Basket Location

- Place the basket against the side of the bin surround where it is to be attached.
- Ensure the basket is level and at the correct height.
- Use masking tape or similar to mark the top and side position of the basket.



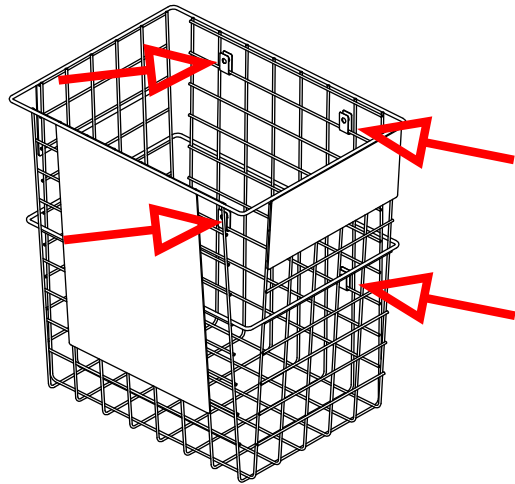
Generic bin surround shown. Size and style may vary.

Wire Clip Attachment

- Place the 4 supplied wire clips onto the horizontal wires on the back face on the basket.

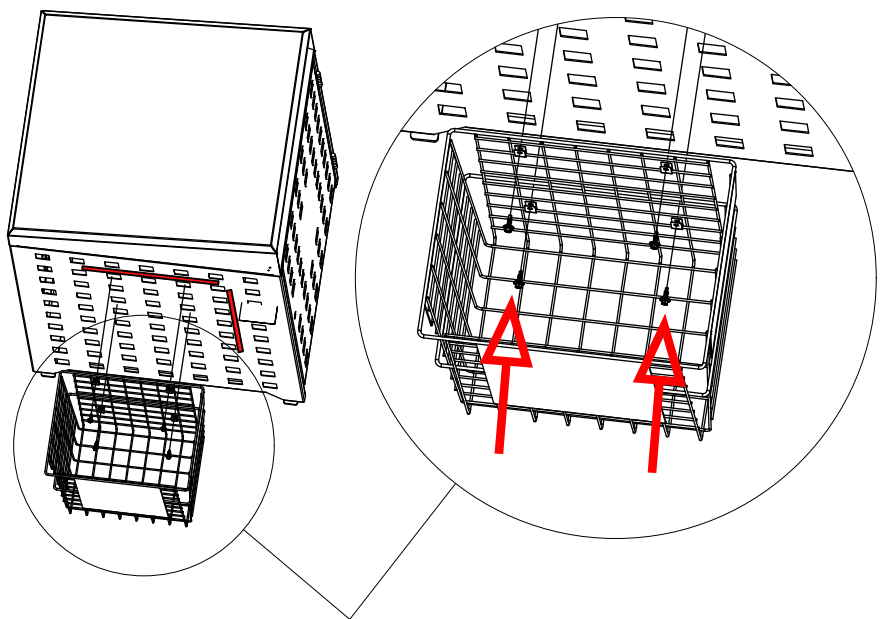
Notes:

There should be 2 wire clips as high as possible and 2 as low as possible. Both as far apart as possible. Locations may vary to fit with any cut outs or perforations in your bin surround.



Screw Basket To Bin Surround

- Hold the basket against the bin surround and align the edges with the taped marks made in the previous step.
- Using an impact driver or equivalent, attach the basket to the bin surround with a 12g Tek screw in the top right corner P-clip.
- Double check location and that the basket is level. Screw the remaining 3 Tek screws in checking for level as you progress.
- Remove tape and clean surfaces.



Note:
If you are attaching to a stainless steel panel thicker than 1.6mm thick, you will need to pre-drill using a Ø3.5mm drill bit.