

Wandin Modular Suite

General Installation Instructions



- These are generic instructions for the installation of Draffin Street Furniture's Wandin Modular Suite.
- These instructions cover the assembly and basic installation of the various suite options.
- These instructions do not apply to ground fixings, wall fixings or other items outside the control of Draffin Street Furniture. These items are the responsibility of the installer.
- Further information is available by contacting Draffin Street Furniture (www.draffin.com.au) via the following QR codes:



Draffin Street Furniture Website

- General product and contact information



Wandin Architectural Guide

- Indepth information regarding the Wandin Modular Suite

Concrete Plinth / Seat Installation

Position the Concrete Plinths and Benches

- Position the plinth or bench seat blocks as per supplied layout specific to your order.

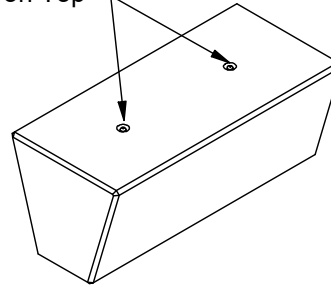
Standard lifting lugs are supplied on all major concrete modules.

- Plinth Modules - Located on top (Hidden under frames)
- Bench Height Modules - Located on ends

Tip: If required, a matching grout can be supplied to hide lugs or use Sikaflex PRO+ or equivalent.

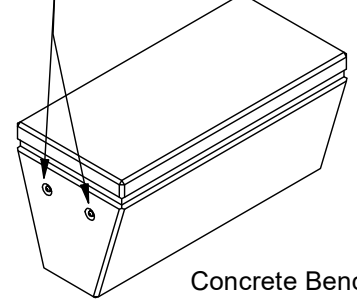
Note: No lifting lugs are provided on minor concrete modules. Use an appropriate sling to move minor modules into place.

Lifting Lugs on Top



Concrete Plinths

Lifting Lugs on Both Ends



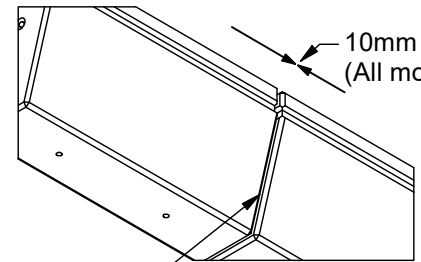
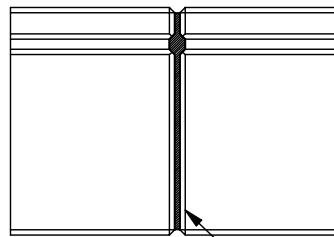
Concrete Benches

Required Spacing

- The blocks have been designed to have a 10mm gap between them.
- Failure to do so can result in long term damage as well as incorrect final dimensions.
- The gaps can be filled using Sikaflex PRO+ or equivalent.

Tip: Use 10mm builders spacers to set the gaps.

10



10mm Gap
(All modules)

Caulk Gap with Sikaflex PRO+
or Equivalent

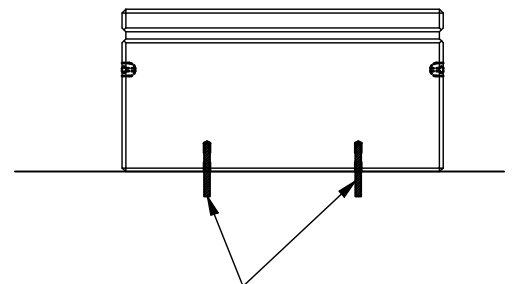
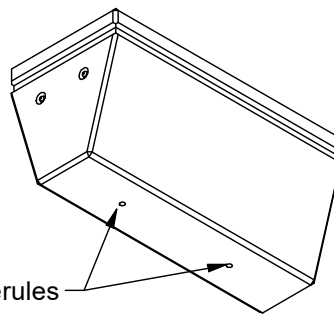
Surface Mounting Concrete Modules

- Concrete modules can be placed on compacted crushed rock or concrete slab.

Note: Site engineer to specify sub surface construction

- All concrete modules have M16 ferules provided for mounting to concrete surfaces.

Ferules



Screw supplied, M16 all-thread anchors into the ferules in the bottom face of the plinth. These can be used to anchor to the ground. E.g Chemset into a concrete footing

Multiple Seat / Table Module Joining

Spacers are used to correctly space Wandin seats, benches, and tables from each other. Wandin furniture is designed to bolt end to end using these spacers, ensuring uniform batten spacing. Spacers are included automatically when two or more Wandin modules are to be bolted together. For flexibility, two spacer variants are available. One for simple joining, and one that includes a leg mount that provides an alternate position for leg placement.

Spacers and hardware

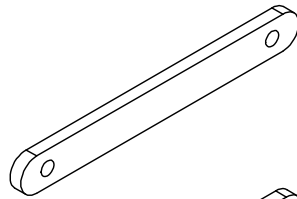
Each spacer is supplied with the required hardware to attach each seat or table module together. For each spacer the noted hardware is required:

Notes: All fasteners are 316 Stainless Steel

Standard spacers are for basic joining of seat or table modules.

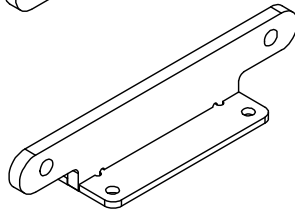
Mount Spacers both join seat or table modules as well as connection to a leg or concrete plinth.

The type of joiner required for each joint will be noted on your order's supplied layout.

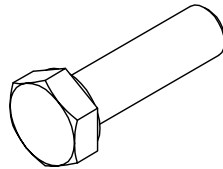


(1) Standard Spacer

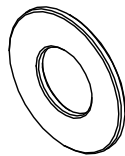
or,



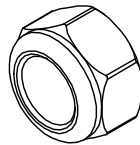
(1) Mount Spacer



(2) M10 x 35 Hex Bolt - 2 Per spacer



(3) M10 Flat Washer - 4 Per spacer



(4) M10 Nylock Nut - 1 Per spacer

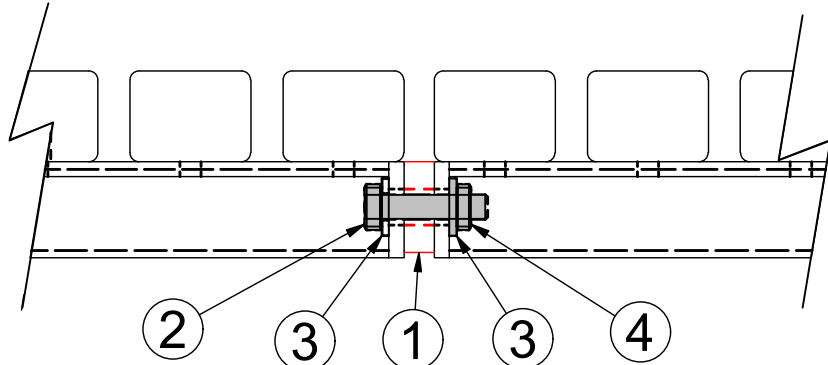
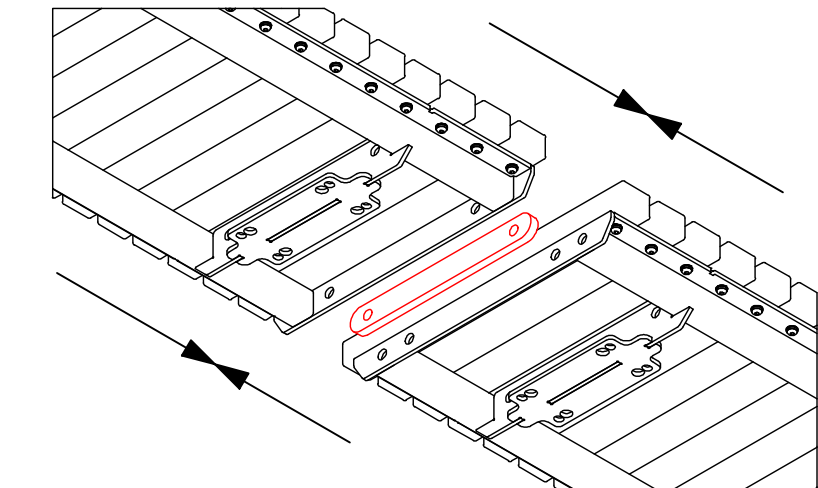
Join Modules (Standard)

Place joiner between modules.
Join using noted hardware.

Tips:

The slats can be easily removed and replaced at any time, to gain access to fasteners.

Leave all fasteners loose until the whole assembly is in position. When tightening the joiner fasteners, ensure all seat or table modules are aligned correctly.



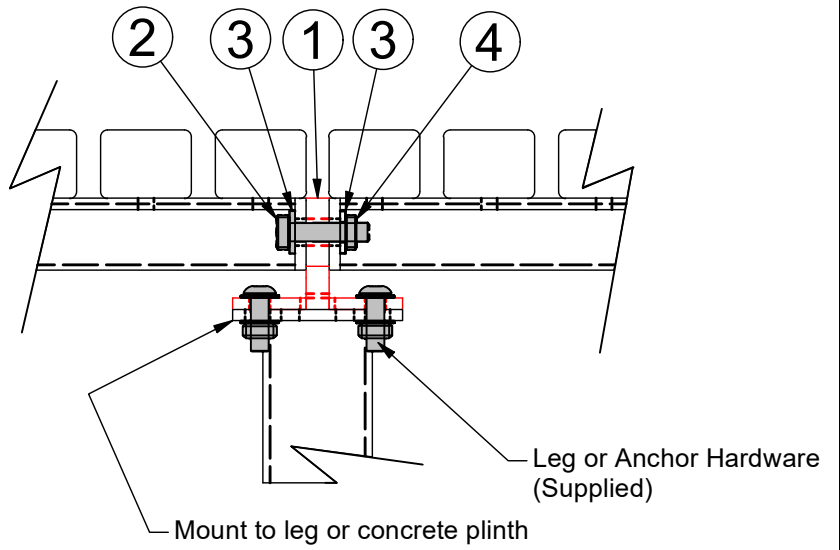
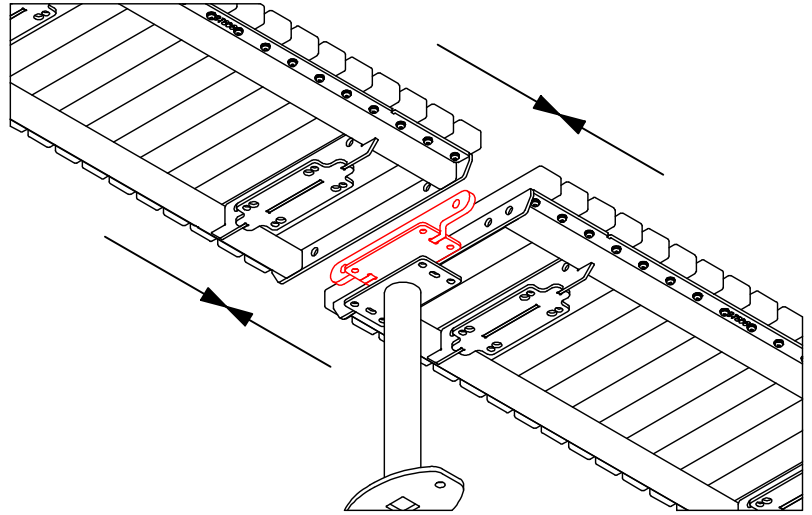
Join Modules (Mount Spacer)

- Place joiner between modules.
- Join using noted hardware.
- Attach leg or attach to concrete plinth (see further for details).

Tips:

The slats can be easily removed and replaced at any time, to gain access to fasteners.

Leave all fasteners loose until the whole assembly is in position. When tightening the joiner fasteners, ensure all seat or table modules are aligned correctly.



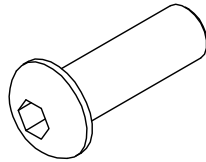
Leg Attachment

Leg fasteners

- Each leg requires the noted hardware:

Tip: Leave all fasteners loose until the whole assembly is in position. When tightening the joiner fasteners, ensure all seat or table modules are aligned correctly.

Notes: All fasteners are 316 Stainless Steel



(1) M8 x 25 Button Head Capscrew - 4 Per leg



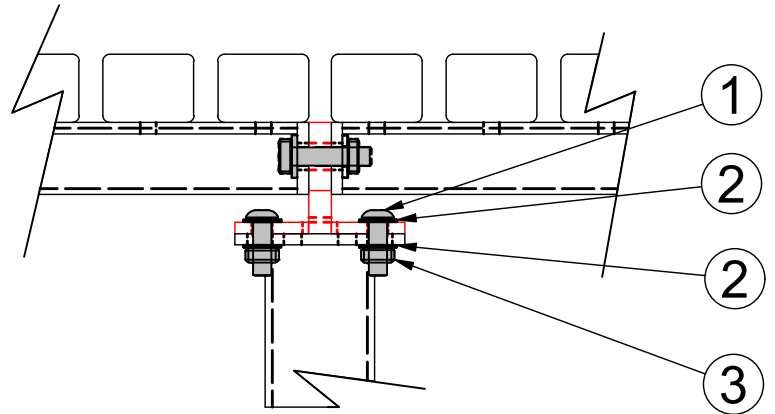
(2) M8 Flat Washer - 8 Per leg



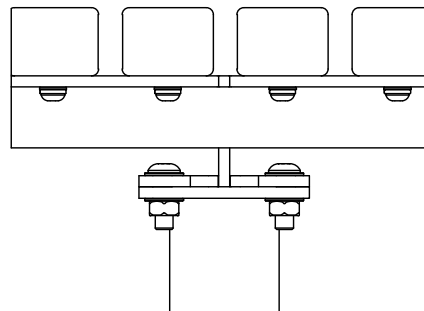
(1) M8 x 25 Flat Washer - 4 Per leg

Leg Attachment

- All leg options use the same fasteners configuration as shown.



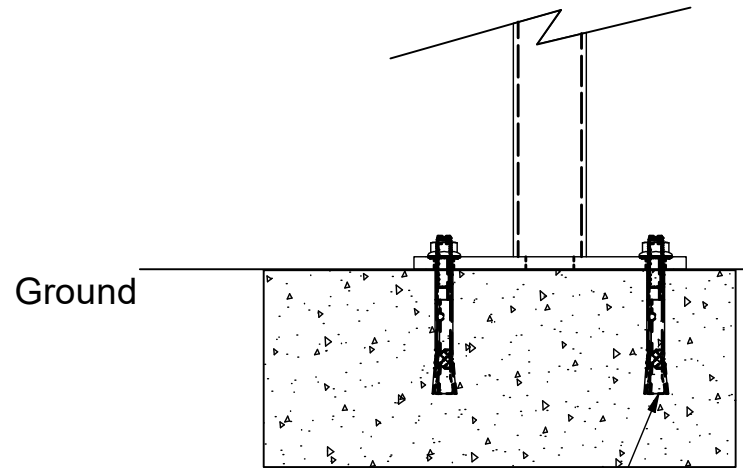
Leg to Joiner Spacer



Leg to Seat Frame

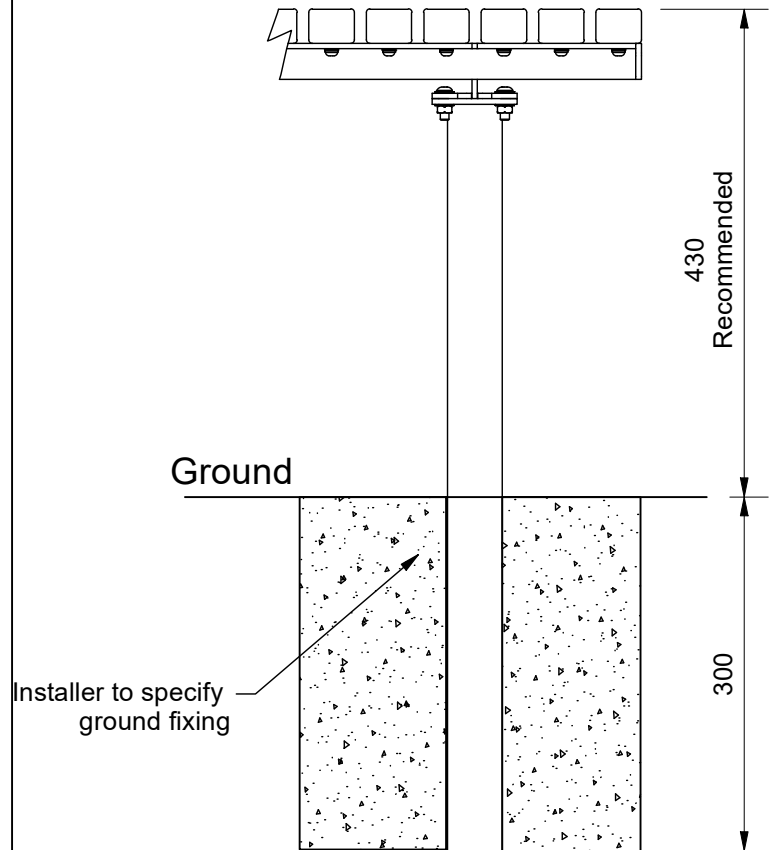
Leg to Ground Options

Typical Leg Surface Mount



Provision for up to 1/2" (or M12) ground anchors.
To be specified and supplied by the installer.

Typical Inground Steel Leg Mount



Concrete Module End Mount

Hardware Required

- The following hardware is supplied to attach a seat frame to the end of a concrete seat block.

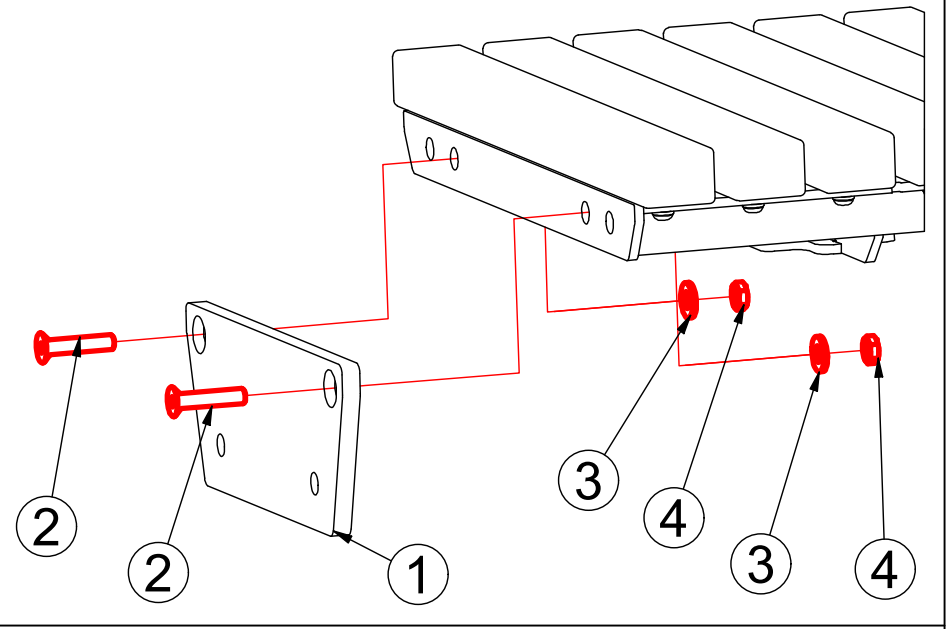
Note: The supplied Dynabolts are specified to attach to Draffin Concrete Seat Blocks. If the seats are to be attached to another wall surface, It is the responsibly of the installer to specify the anchor type and size.

- (1) End Mount Plate (1 Per end)
- (2) M8 x 30 CSK Screw - 2 Per spacer
- (3) M8 Flat Washer - 2 Per end
- (4) M8 Nylock Nut - 2 Per end
- (5) M12 x 100 DynaBolt - 2 Per end

Attach End Plate

Using the M8 CSK screws, Washers and Nylock Nuts, attach the end plate to the end of the seat frame. Tighten fasteners.

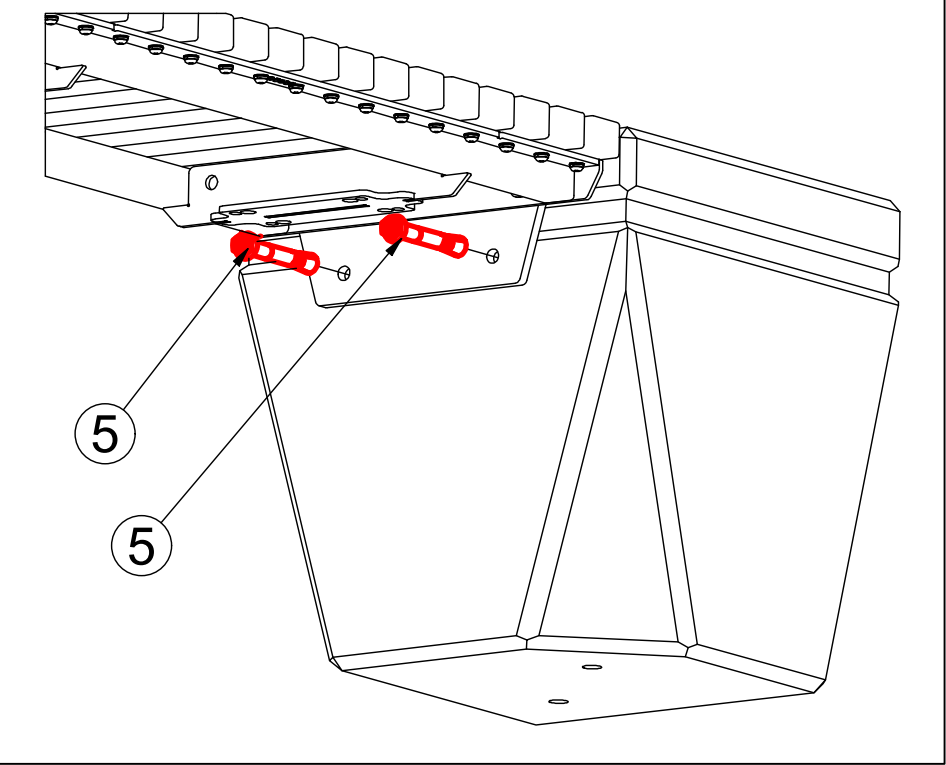
Note: Repeat at the other end if both ends are to be attached to concrete blocks.



Attach Seat Frame to Concrete

- Place the seat frame against the side of the concrete block.
- Position the seat frame, so that the top and side faces of the seat slats and concrete seat block are aligned.
- Using a hammer drill, drill 2 holes through the end plate to suit M12 Dynabolts.
- Fix the frame to the concrete using the supplied Dynabolts.

Note: See note above regarding Dynabolts.

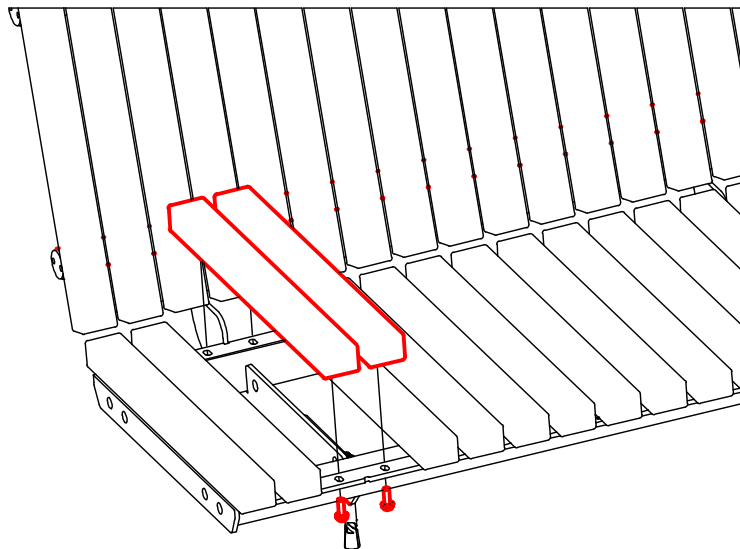


Seat Frames to Concrete Plinths

Remove slats for access.

- Using a 4mm hex key, carefully remove the 2 slats directly above the mount brackets on the seat frame or, joiner mount plate and set aside.

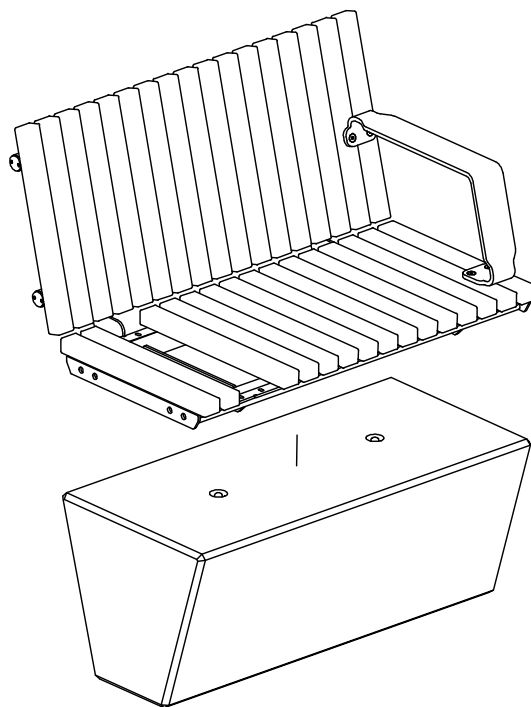
Warning: Do not lose the slats or fasteners.



Place seat on plinth.

- Place seat frame/s on top of the plinth/s.
- Position the seats so they are aligned evenly to the plinths.

Note: It is important that all plinths are correctly installed and frames are aligned with the plinths before proceeding forward. This includes all joiner plates being installed and correct 10mm gaps between concrete plinths / seats.



Fasten seat to plinth.

- Using a hammer drill, drill a $\text{Ø}12\text{mm}$ hole to suit the supplied M12 x 100 Dynabolts.
- Ensure the holes are clean and free of dust and debris.
- Install Dynabolts through the seat frame brackets into the concrete and tighten.

Note: For further Dynabolt instructions and advice, please refer to the Ramset website.

