

Kiama Drinking Fountain

Model 89302 - Kiama Drinking Fountain

DRAFFIN
Street Furniture



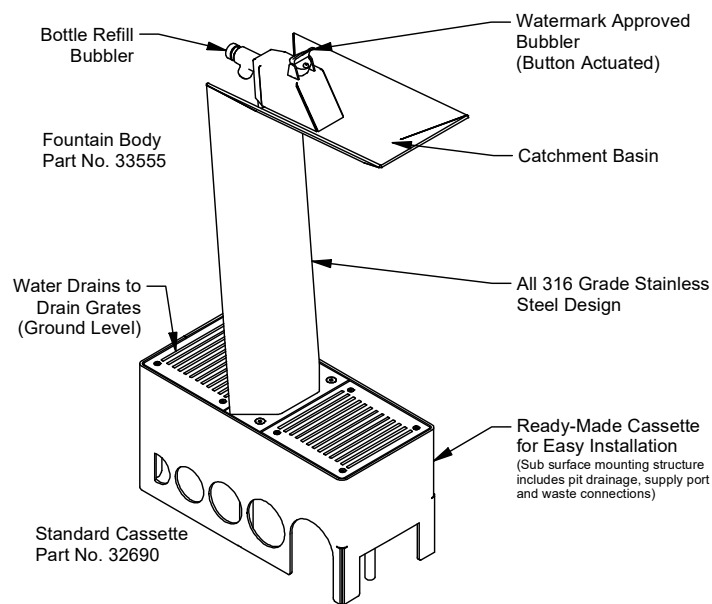
The Kiama Drinking Fountain is a high spec 316 grade stainless steel design, that includes a bottle fill bubbler with options to add a dog bowl depending on your application. Kiama drink fountains employ an in-ground cassette for easy installation.

Options

- Dog Bowl (*Fills from Bottle Refill Bubbler*)
- Pre-Ship Installation Cassette (*Aids Construction Schedules*)
- Cassette Blanking Plate (*make safe option for long term removal*)

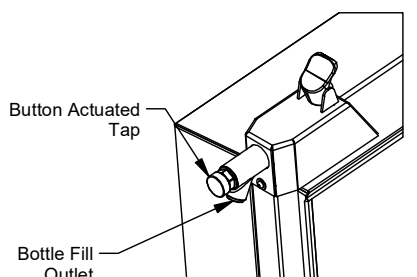
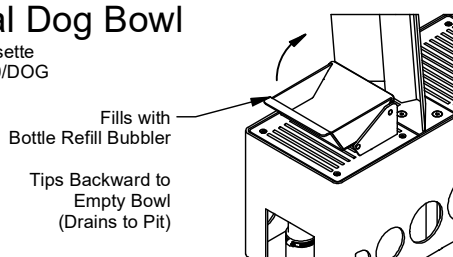
Included as Standard

Bottle Refill Bubbler
Supply line with 1/2" BSP connection
Stainless Steel Installation Cassette with Grates
50mm Waste Pipe Outlet



Optional Dog Bowl

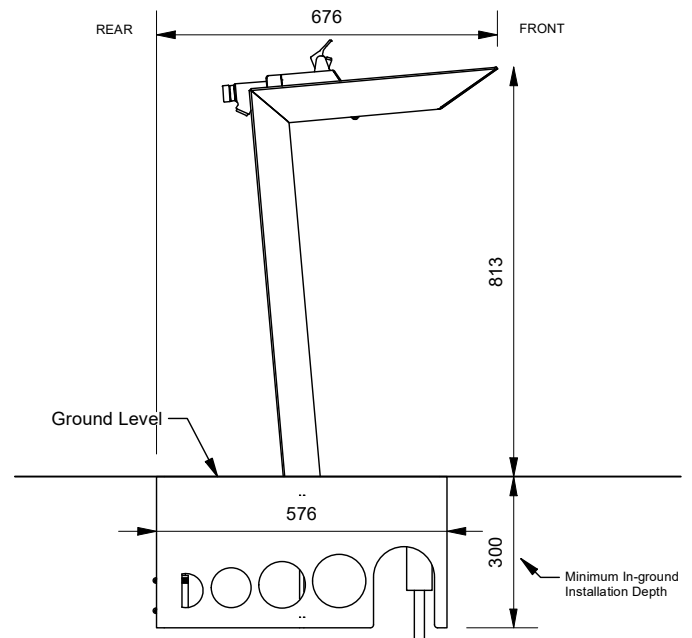
Dog Bowl Cassette
Part No. 32690/DOG



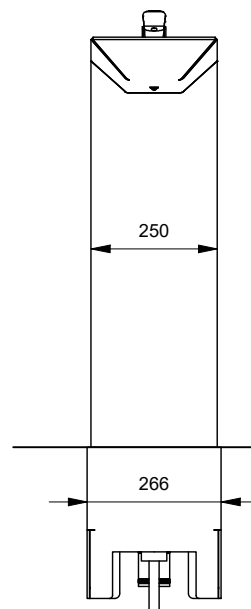
Bottle Fill Bubbler
(Standard)

Standard

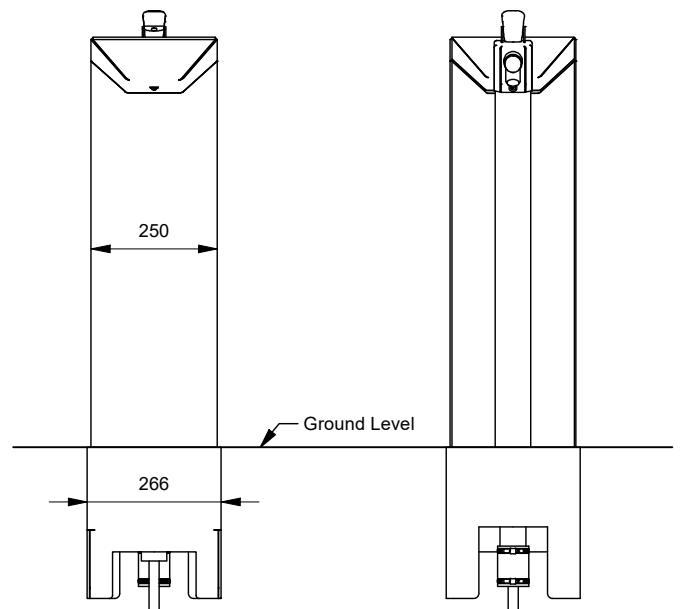
without Dog Bowl or Bottle Refill Bubbler



Front



Rear



More information:
Go to the website for spec inspiration.
89302 - Kiama Drinking Fountain
<https://draffin.com.au/product/kiama-drinking-fountain-gen2/>

Stainless Steel Guide
<https://draffin.com.au/stainless-steel-guide/>

Kiama Drinking Fountain

Model 89302 - Kiama Drinking Fountain

DRAFFIN
Street Furniture

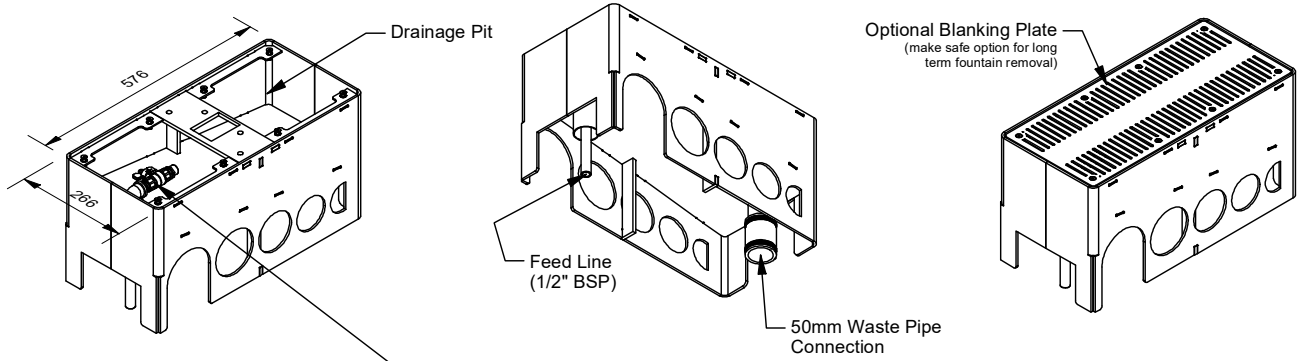


Installation

Model 32690 - Installation Cassette

- for installation into concrete
- install top of cassette level with ground

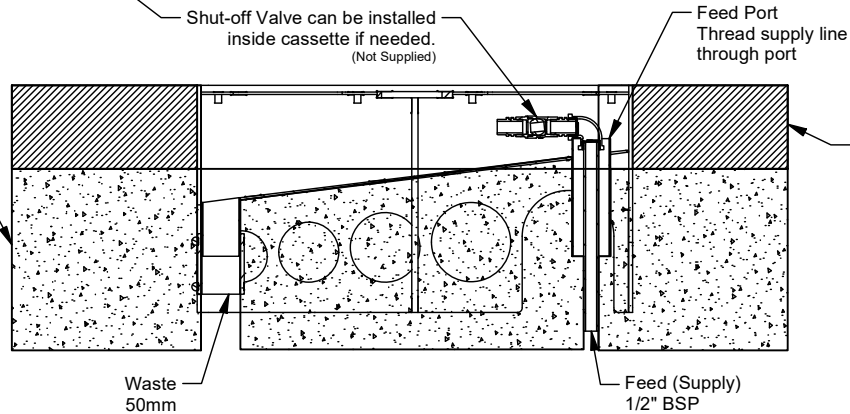
- complete with supply port and 50mm waste outlet
- can be delivered ahead of drink fountain delivery



*Minimum concrete foundation recommendations for sub-level installations.

Foundation

1. Set cassette level in ground with top surface in line with final ground coverings.
2. Fit feed and waste plumbing to cassette.
3. Fix Cassette into ground with concrete

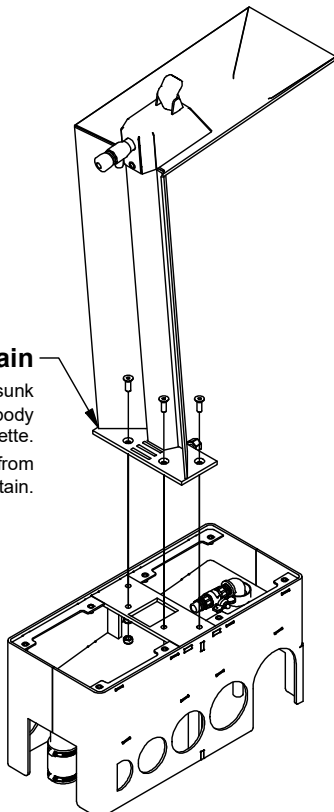


Ground Covering

- As per Site Specification
4. Finish ground covering surface level to top surface of cassette.

Install Fountain

5. Using supplied countersunk screws, fasten fountain body to cassette.
6. Connect supply line from cassette to fountain.



Install Grates

7. Place grates on cassette and fasten using supplied countersunk screws. If installing dog bowl model, dog bowl is located under bottle filler tap with bowl tipping towards the fountain.

