

Brisbane Drinking Fountain

Model 89118 - Brisbane Drinking Fountain

DRAFFIN
Street Furniture



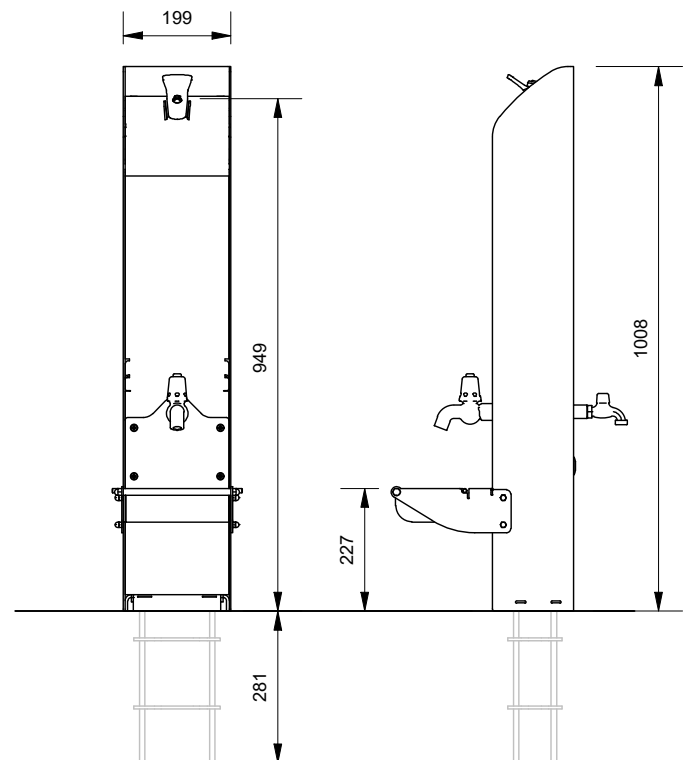
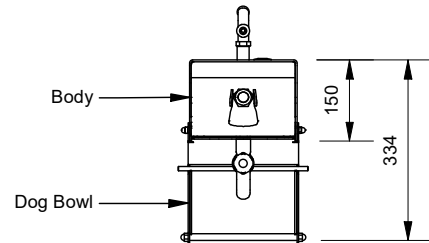
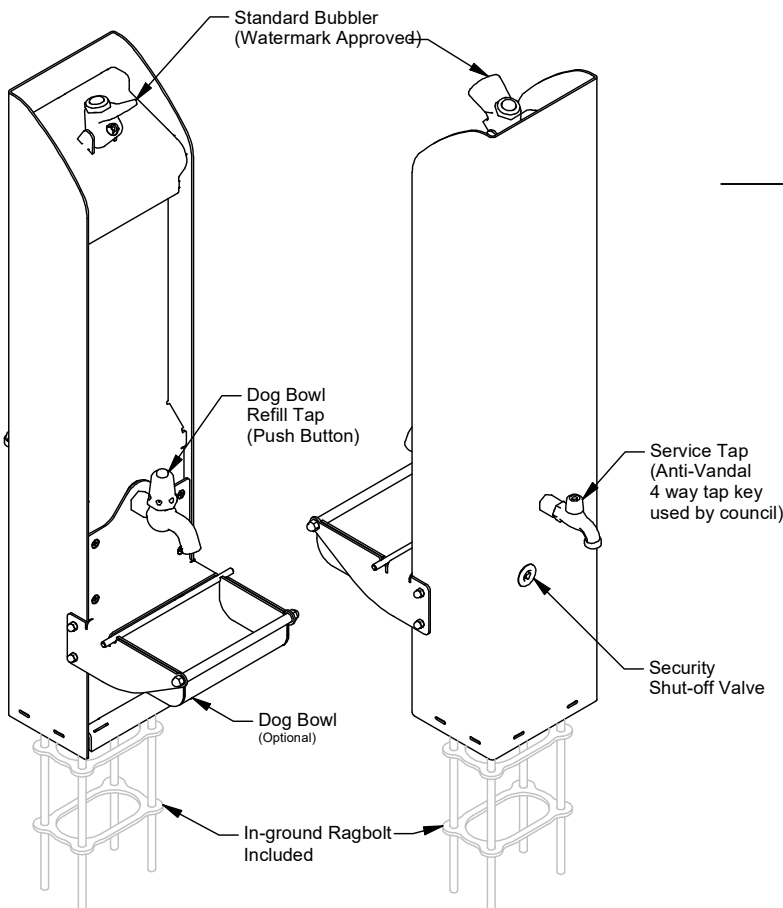
The Brisbane Drinking Fountain features stainless steel construction for reliability and can be optioned with or without a dog bowl with refill tap. This economical drink fountain also has easy to install and service features built in plus an optional service tap, easily making it the best economical outdoor drinking fountain on the market.

Options

- Dog Bowl with Refill Tap
- Anti-Vandal Service Tap

Standard Inclusions

- Standard Push Button Bubbler (Watermark Approved)
- Shut-off Valve
- In-ground Ragbolt



More information:
Go to the website for spec inspiration.

89118 - Brisbane Drinking Fountain
<https://draffin.com.au/product/brisbane-drinking-fountain/>

Stainless Steel Guide
<https://draffin.com.au/stainless-steel-guide/>

Brisbane Drinking Fountain

Model 89118 - Brisbane Drinking Fountain

DRAFFIN
Street Furniture



Installation using supplied Ragbolt

1. Pour concrete footing with ragbolt and water supply in place. Top of ragbolt must be installed 52mm above concrete.
2. Apply Leveling/Spacer plate and level in both directions using supplied bolts and washers approximately 25-27mm above concrete.
3. With front service panel removed, thread water supply pipe through the bottom of the drink fountain and align holes with ragbolt to bolt in place on top of spacer.

