

TITLE				TABLE TENNIS TABLE - ASSEMBLY INSTRUCTION			
PART No.		88775-STEP1 TO STEP 5					
DWG No.		88775 SITE INSTRUCTION.idw			SHEET 1		
MATERIAL							
<b>DRAFFIN</b>				Part of Assemblies			
EP Draffin Manufacturing Pty Ltd				9 Edelmaier St Bayswater Vic 3153			
Drawn By		Brad		Drawn Date		10/10/2019	
Rev		Date		Description			
STANDARD TOLERANCES U.S.O		3RD ANGLE PROJECTION		SHEET METAL			
LINEAR		ANGULAR		ALL BENDS 90° U.S.O			
X. ±1		X° ±1°		GENERAL			
X.X ±0.25		X.X° ±0.5°		BREAK ALL SHARP EDGES			
X.XX ±0.05		X.XX° ±0.02					

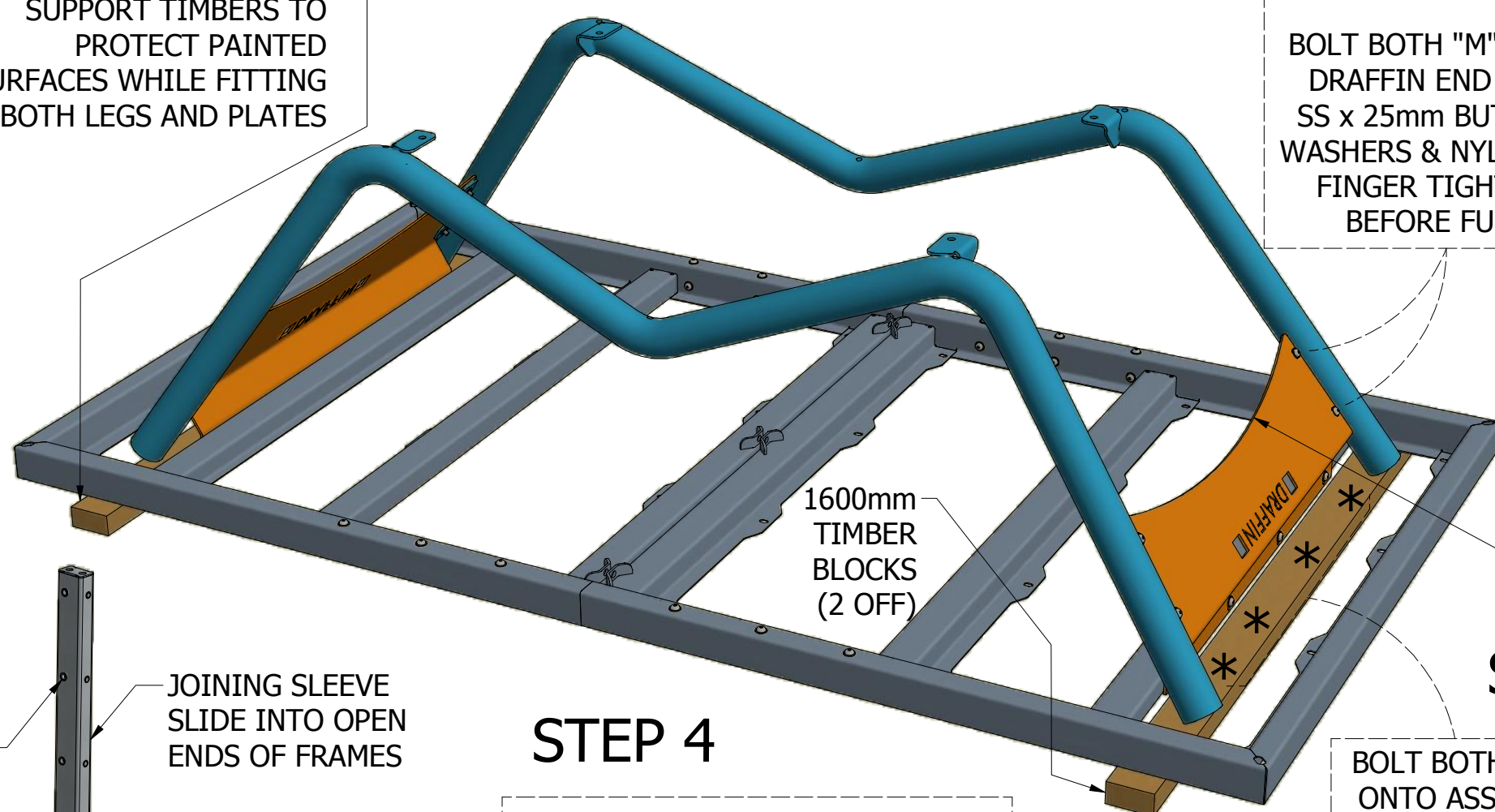
ISSUED OCT 2019

# STEP 3

WRAP CLOTH AROUND SUPPORT TIMBERS TO PROTECT PAINTED SURFACES WHILE FITTING BOTH LEGS AND PLATES

BOLT BOTH "M" SHAPED LEGS ONTO DRAFFIN END PLATES USING M10 SS x 25mm BUTTON HEAD SCREWS WASHERS & NYLOC NUTS (8 PLACES) FINGER TIGHT ALL BOLTS FIRST BEFORE FULLY TIGHTENING

PLACE TIMBER UNDER FRAME ABOUT 180mm IN FROM FRAME ENDS TO SUPPORT LEG ENDS



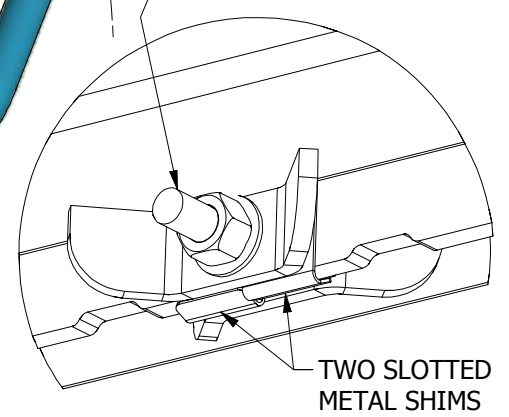
# STEP 2

BOLT BOTH DRAFFIN END PLATES ONTO ASSEMBLED FRAME USING M10 SS x 25mm BUTTON HEAD SCREWS & WASHERS (8 PLACES) FINGER TIGHT AT THIS STAGE

# STEP 4

POSITION 8mm THICK NET INTO 10mm WIDE GAP IN TOP FRAMES BOLT IN THREE PLACES BELOW USE SHIMS TO FILL GAPS IF REQ'D TIGHTEN UP NUTS ALL BOLTS

M10 SS BUTTON HEAD x 40mm SCREWS FLAT WASHERS AND NYLOC NUTS (3 PLACES)



TWO SLOTTED METAL SHIMS

# STEP 1

FIT BOTH SLEEVES IN OPEN ENDS OF BOTH FRAME HALVES FIT ALL 24 WASHERS/BOLTS FINGER TIGHT BEFORE DOING UP WITH HEX DRIVE TOOL

FACE THREADED HOLES AS SHOWN BELOW

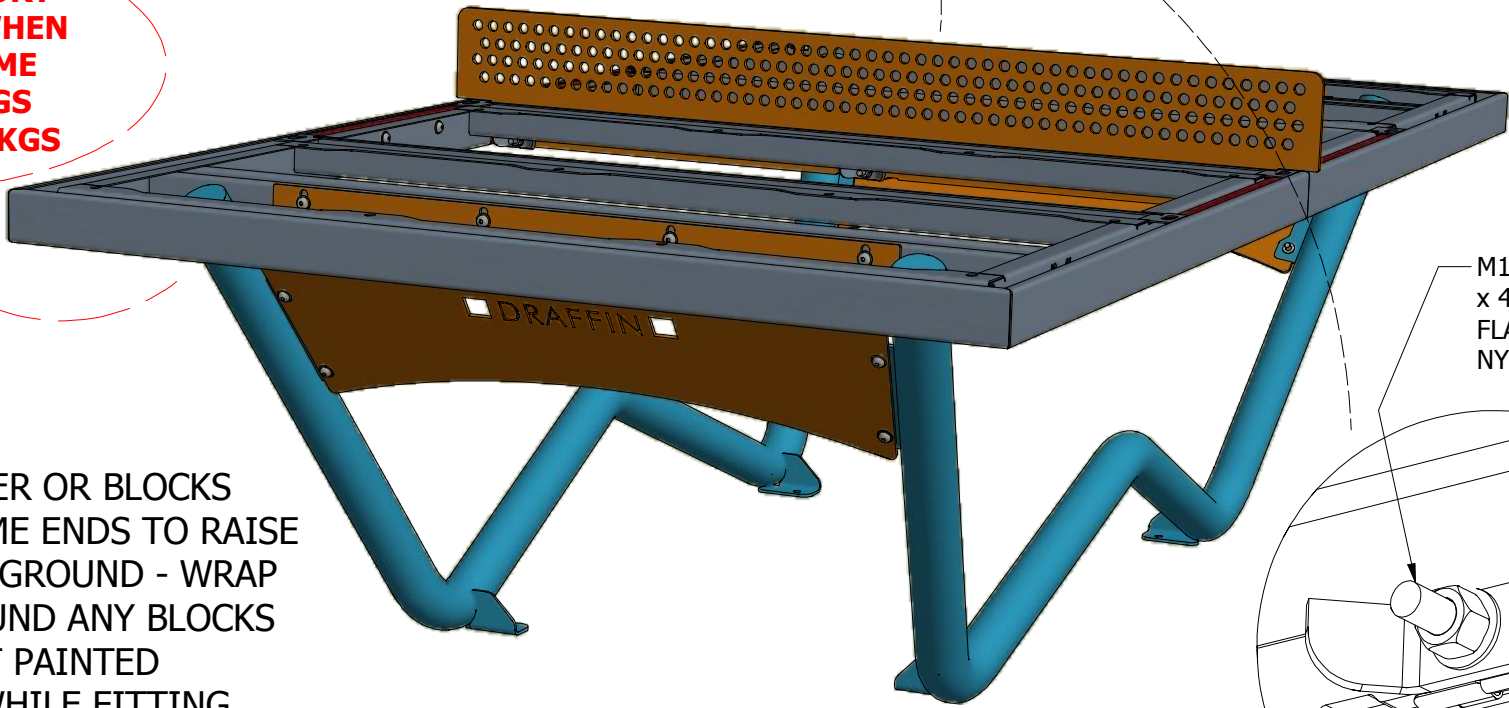
JOINING SLEEVE SLIDE INTO OPEN ENDS OF FRAMES

M10 SS BUTTON HEAD SCREWS x 25mm LONG FIT IN 24 PLACES

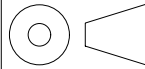
**2 PERSON EFFORT AFTER STEP 3 WHEN ROLLING FRAME ONTO IT'S LEGS WEIGHT IS 115KGS**

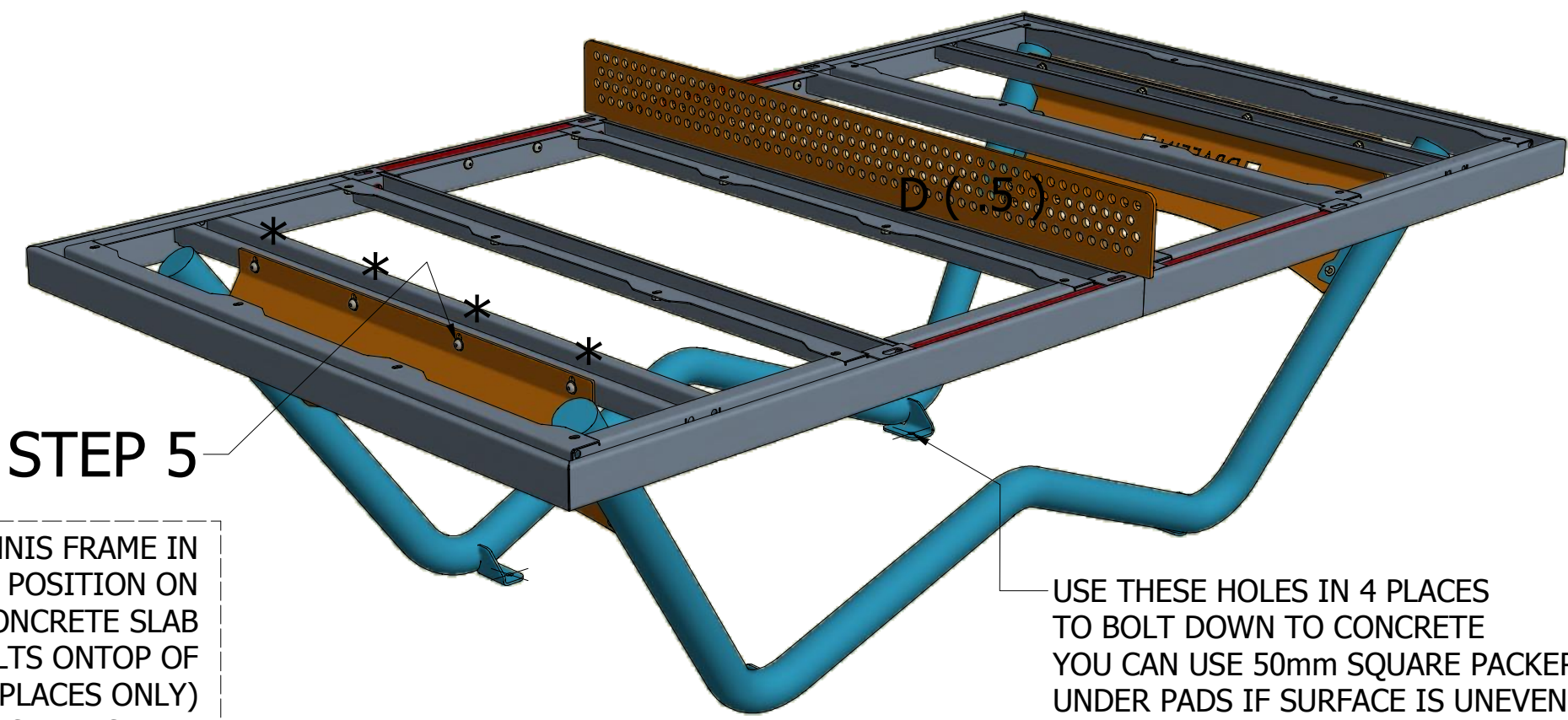
PLACE TIMBER OR BLOCKS UNDER FRAME ENDS TO RAISE UP OFF THE GROUND - WRAP CLOTH AROUND ANY BLOCKS TO PROTECT PAINTED SURFACES WHILE FITTING SLEEVES

300mm TIMBER BLOCKS





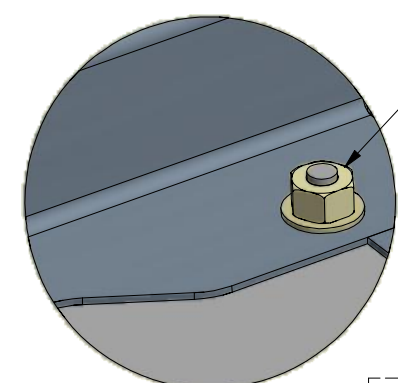
TITLE DRAFFIN OUTDOOR TABLE TENNIS TABLE			
PART No.	88775-STEP4		
DWG No.	88775 SITE INSTRUCTION.idw	SHEET 2	
MATERIAL			
<b>DRAFFIN</b>		Part of Assemblies	
EP Draffin Manufacturing Pty Ltd 9 Edelmaier St Bayswater Vic 3153			
Drawn By	Brad	Drawn Date	10/10/2019
Rev	Date	Description	
STANDARD TOLERANCES U.S.O		3RD ANGLE PROJECTION	SHEET METAL
LINEAR	ANGULAR		ALL BENDS 90° U.S.O
X. ±1	X° ±1°		GENERAL
X.X ±0.25	X.X° ±0.5°		BREAK ALL SHARP EDGES
X.XX ±0.05	X.XX° ±0.02		



## STEP 5

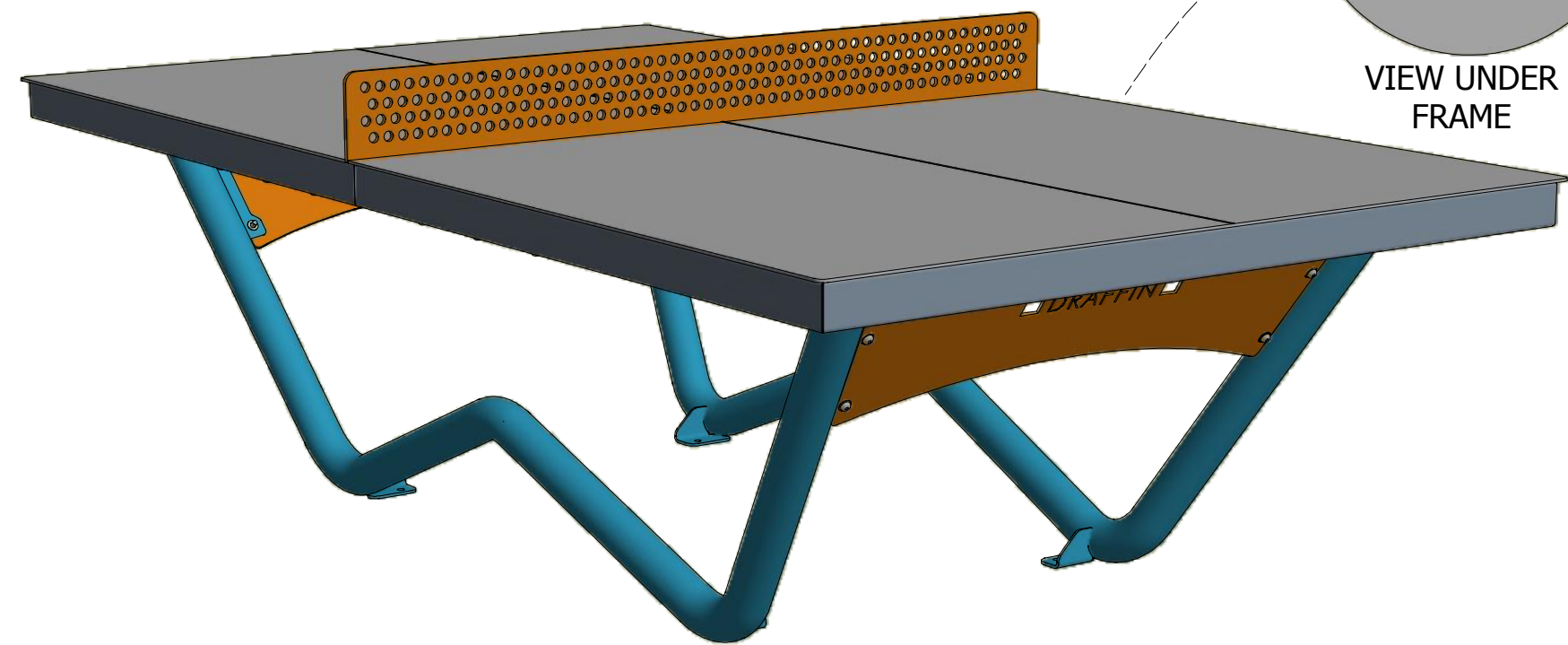
PLACE TABLE TENNIS FRAME IN FINAL PLAYING POSITION ON FLAT & LEVEL CONCRETE SLAB  
 LOOSEN ALL M10 BOLTS ONTOP OF DRAFFIN END PLATES (8 PLACES ONLY)  
 USE SLOTS IN PLATES AND SPIRIT LEVEL TO ADJUST HEIGHT OF FRAME  
 AIM TO GET HORIZONTAL SURFACES IN BOTH DIRECTIONS. FULLY TIGHTEN BOLTS WHEN HAPPY WITH LEVELS

USE THESE HOLES IN 4 PLACES TO BOLT DOWN TO CONCRETE  
 YOU CAN USE 50mm SQUARE PACKERS UNDER PADS IF SURFACE IS UNEVEN.  
 (4 HOLES AT 14mm DIAM)



M8 NYLOC NUTS & FLAT WASHERS  
 24 PLACES

## STEP 6



VIEW UNDER FRAME

LIFT BOTH TABLE TOPS INTO POSITION  
 ROUNDED CORNERS OF BOTH SHEETS FACE OUTWARDS. (THREADS FACE DOWN)  
 PUSH BOTH SHEETS UP AGAINST NET SURFACE SO THERE IS MINIMAL GAPS  
 FIT M8 NYLOC NUTS & FLAT WASHERS ON TO THREADED STUDS UNDERNEATH  
 TIGHTEN NYLOC NUTS TO PULL TABLE TOPS DOWN ONTO FRAMES BELOW  
 24 PLACES