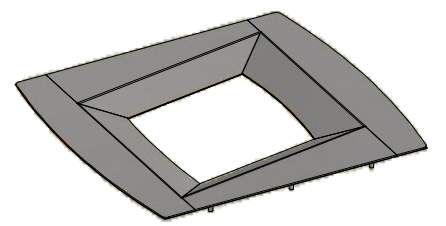


888 INFINITY SERIES BIN SURROUND
SELECTION GUIDE

PAGE: 1

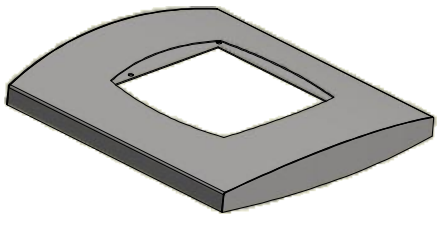
120L - 88801
240L - 88811
ASHTRAY OPTION: YES
SS ONLY

FLAT
23349 - 120L PLAIN
23349/AT -120L ASHTRAY
25687 - 240L PLAIN
25687/AT - 240L ASHTRAY

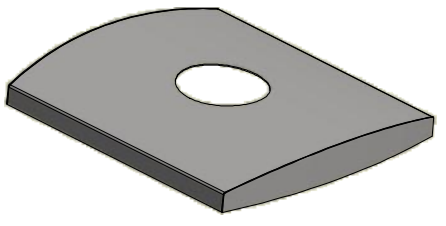


120L - 88802
240L - 88812
ASHTRAY OPTION: NO
SS or PC ZP

LOW CURVED
RUBBISH
23420/RUB - 120L
25715/RUB - 240L

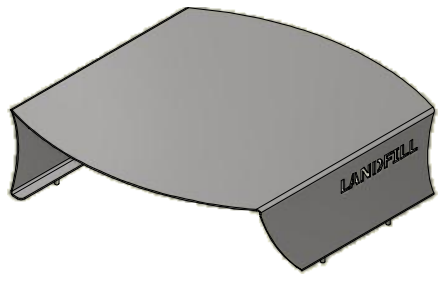


LOW CURVED
RECYCLE
23420/REC - 120L
25715/REC - 240L

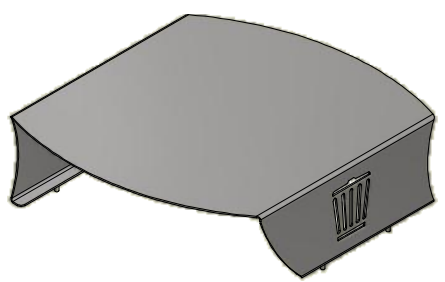


120L - 88803
240L - 88813
ASHTRAY OPTION: YES
SS or PC ZP (MOUNTED TO SS FLAT COVER CHUTE)

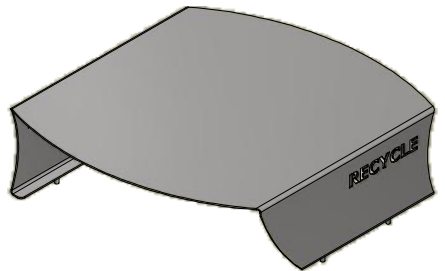
FORMED COVER
LANDFILL TEXT
23346 -120L
25697 - 240L



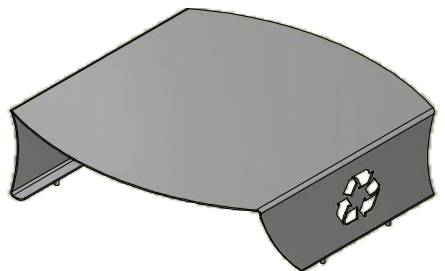
FORMED COVER
LANDFILL MOTIF
23346/M -120L
25697/M - 240L



FORMED COVER
RECYCLE TEXT
23346/REC -120L
25697/REC - 240L

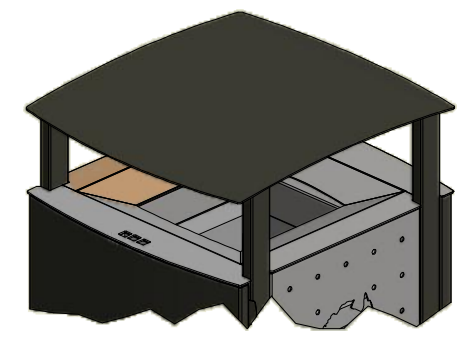


FORMED COVER
RECYCLE MOTIF
23346/REC/M -120L
25697/REC/M - 240L



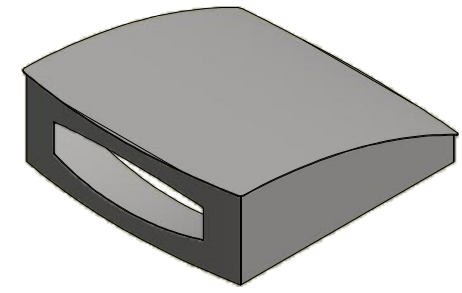
120L - 88804
240L - 88814
ASHTRAY OPTION: YES
SS or PC ZP (WITH SS FLAT COVER CHUTE)

CANOPY
23344 -120L
26395 - 240L

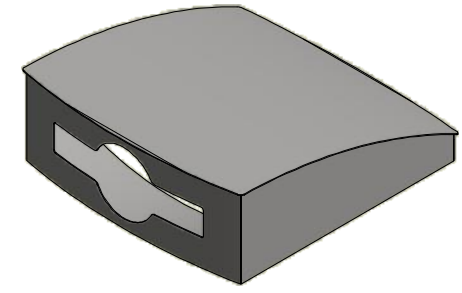


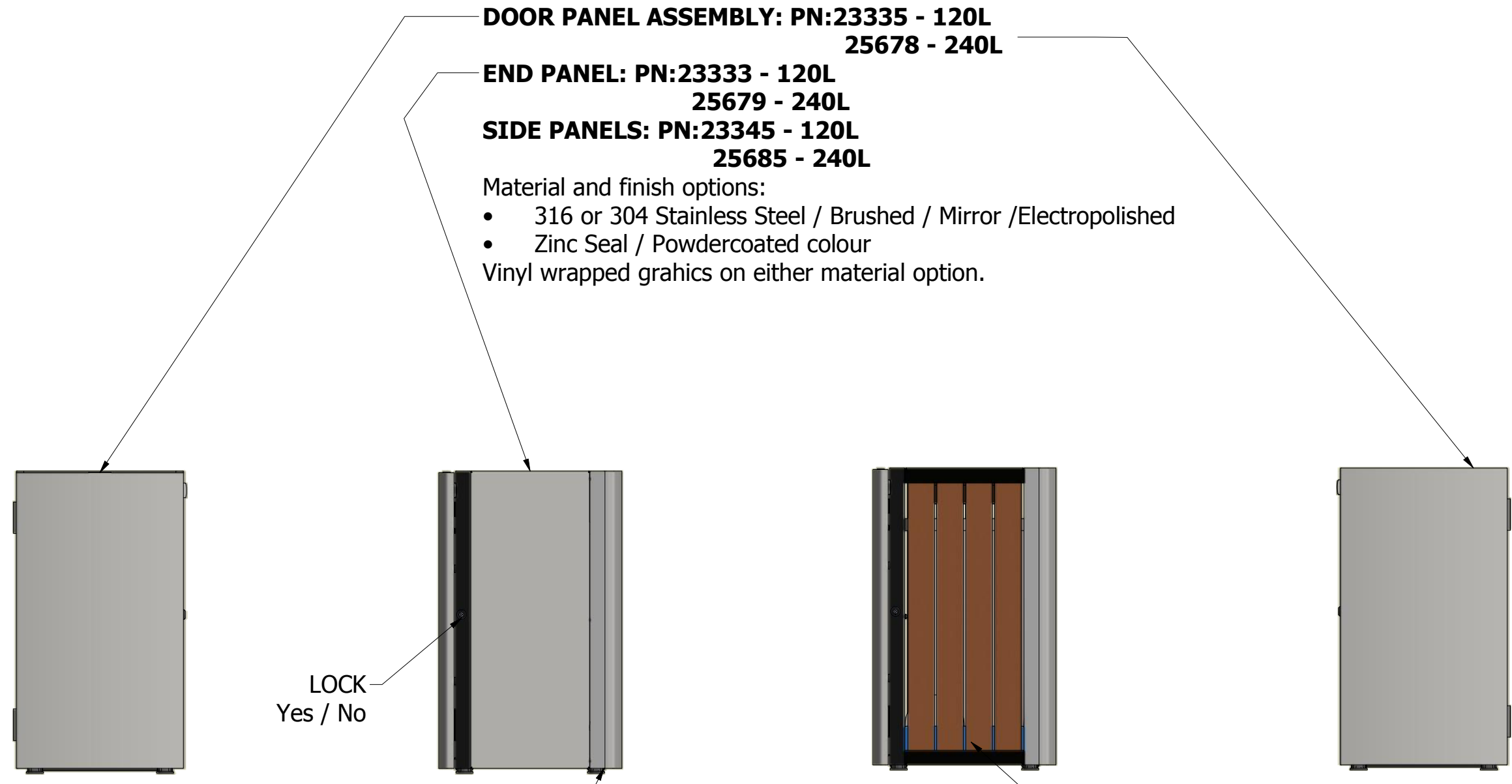
120L - 88805
240L - 88815
ASHTRAY OPTION: NO
SS or PC ZP

SLOPED FRONT OPENING
RUBBISH
23407/RUB - 120L
25716/RUB - 240L



SLOPED FRONT OPENING
RECYCLE
23407/REC - 120L
25716/REC - 240L





**DOOR PANEL ASSEMBLY: PN:23335 - 120L
25678 - 240L**

**END PANEL: PN:23333 - 120L
25679 - 240L**

**SIDE PANELS: PN:23345 - 120L
25685 - 240L**

Material and finish options:

- 316 or 304 Stainless Steel / Brushed / Mirror /Electropolished
- Zinc Seal / Powdercoated colour

 Vinyl wrapped grahics on either material option.

LOCK
Yes / No

FRAME SUPPLY KIT:
 PN: 25039 (STANDARD 120L)
 25040 (CANOPY 120L)
 25039/240 (STANDARD 240L)
 25040/240 (CANOPY 240L)
 Material and finish options:

- 316 or 304 Stainless Steel / Brushed / Mirror /Electropolished
- Zinc Seal / Powdercoated colour

**SLAT SIDE PANEL
PN: 25038 - 120L
25038/240 - 240L**

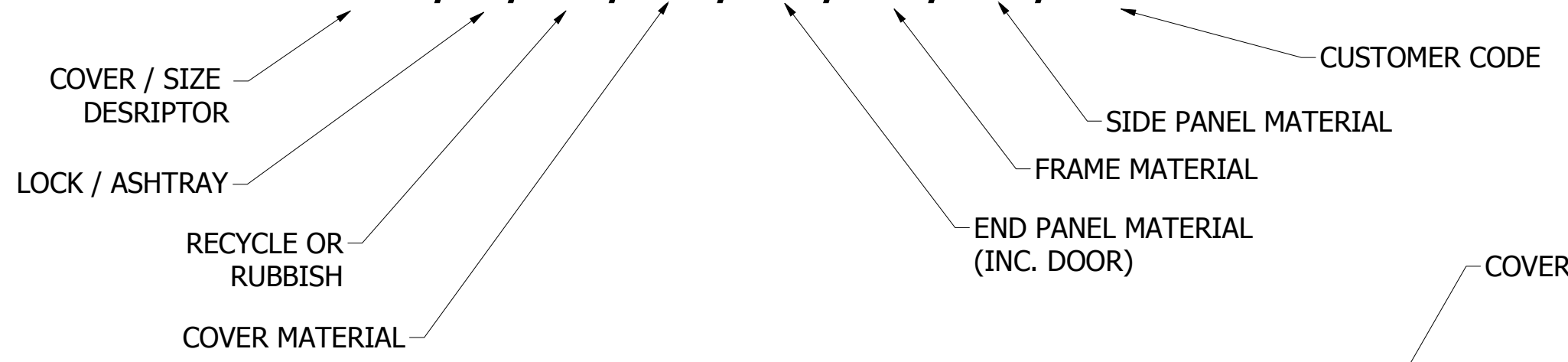
- Support brackets share the same material / finish options as door, end and side panels.
- Slat material options:
 -Spotted Gum
 -Rewood
 -Recycled plastic

**888 INFINITY SERIES BIN SURROUND
SELECTION GUIDE**

PAGE: 3

NOTE:
MAXIMUM CHARACTERS SHOWN

888XX / X / XX / CM / EM / FM / SM / XXX



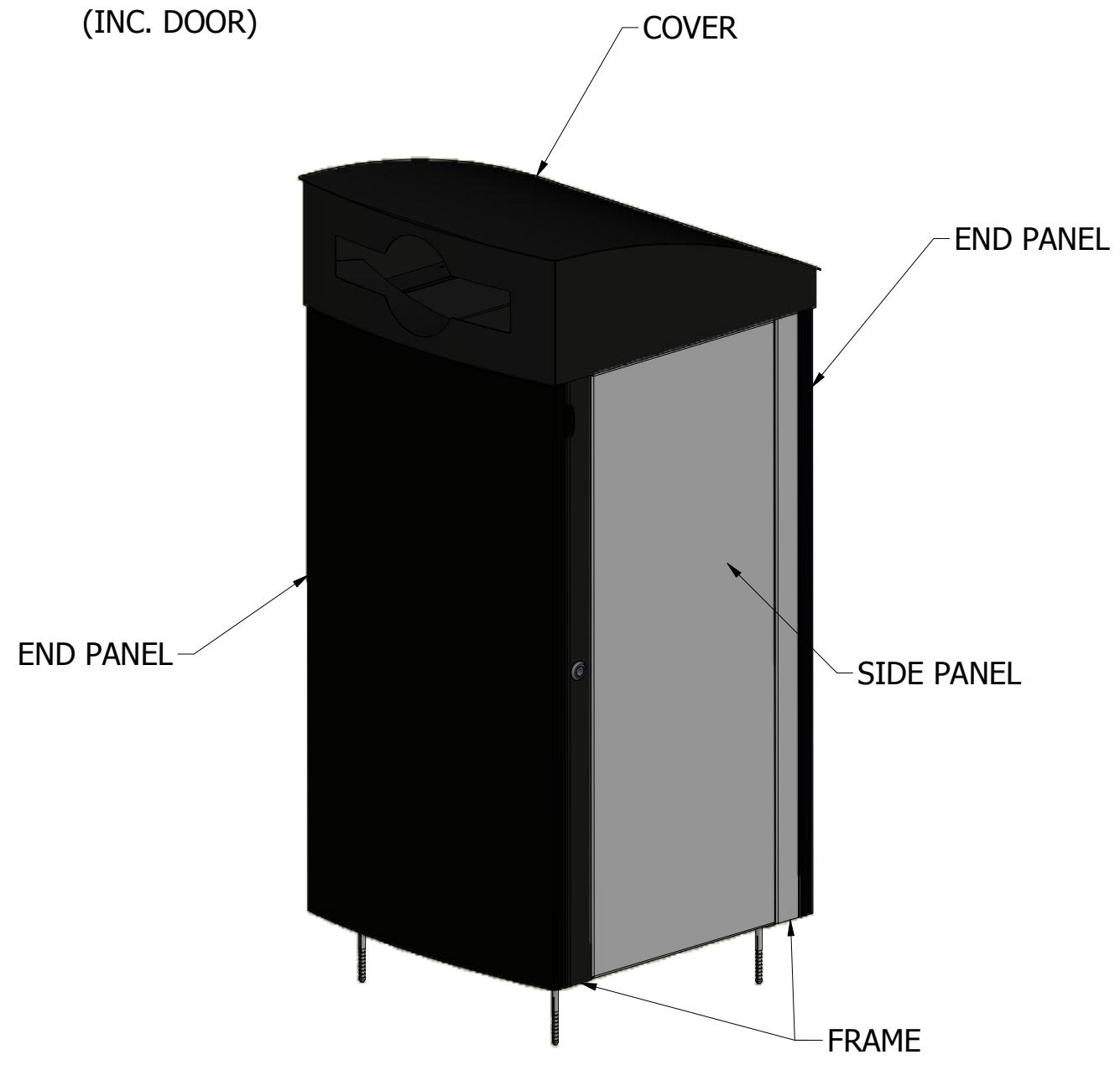
LOCK / ASHTRAY	
DESCRIPTION	PN INPUT
ZINC LOCK	1
ZINC LOCK, ASHTRAY	2
SS LOCK	3
SS LOCK, ASHTRAY	4

MATERIAL / FINISH	
MATERIAL	PN INPUT
316SS	S6
304SS	S4
ZP POWDER COATED	PC
ZP VINYL WRAPPED	VW
HARDWOOD SLATS	HS
COMPOSITE SLATS	CS

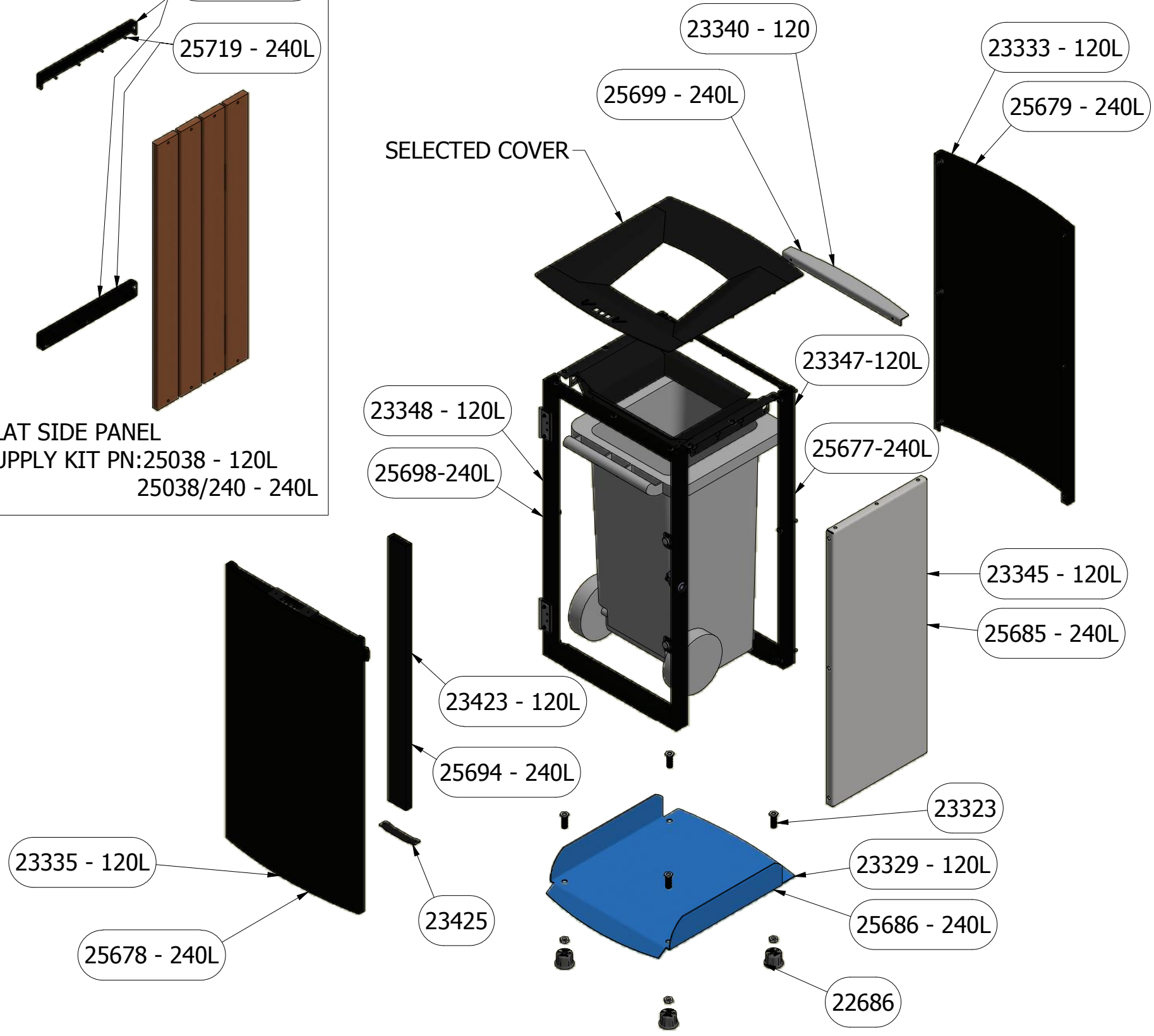
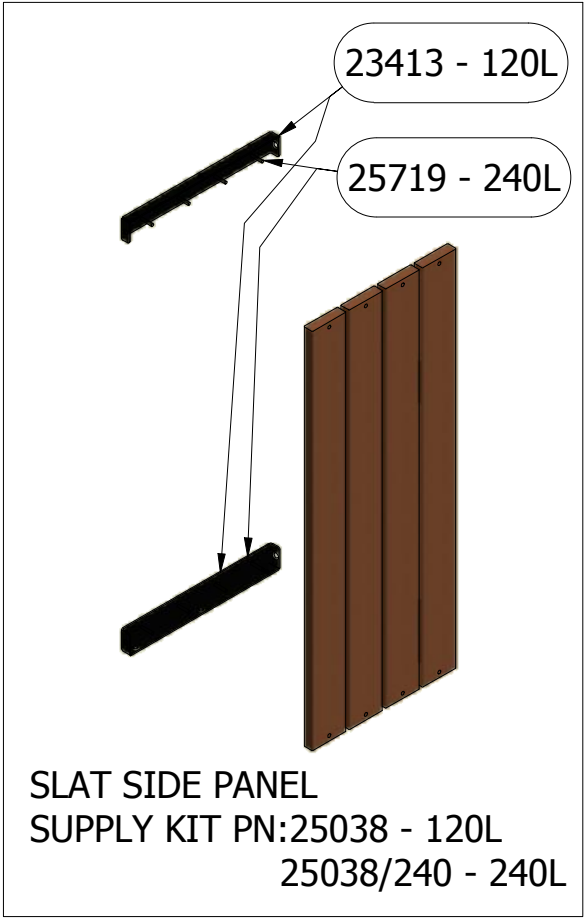
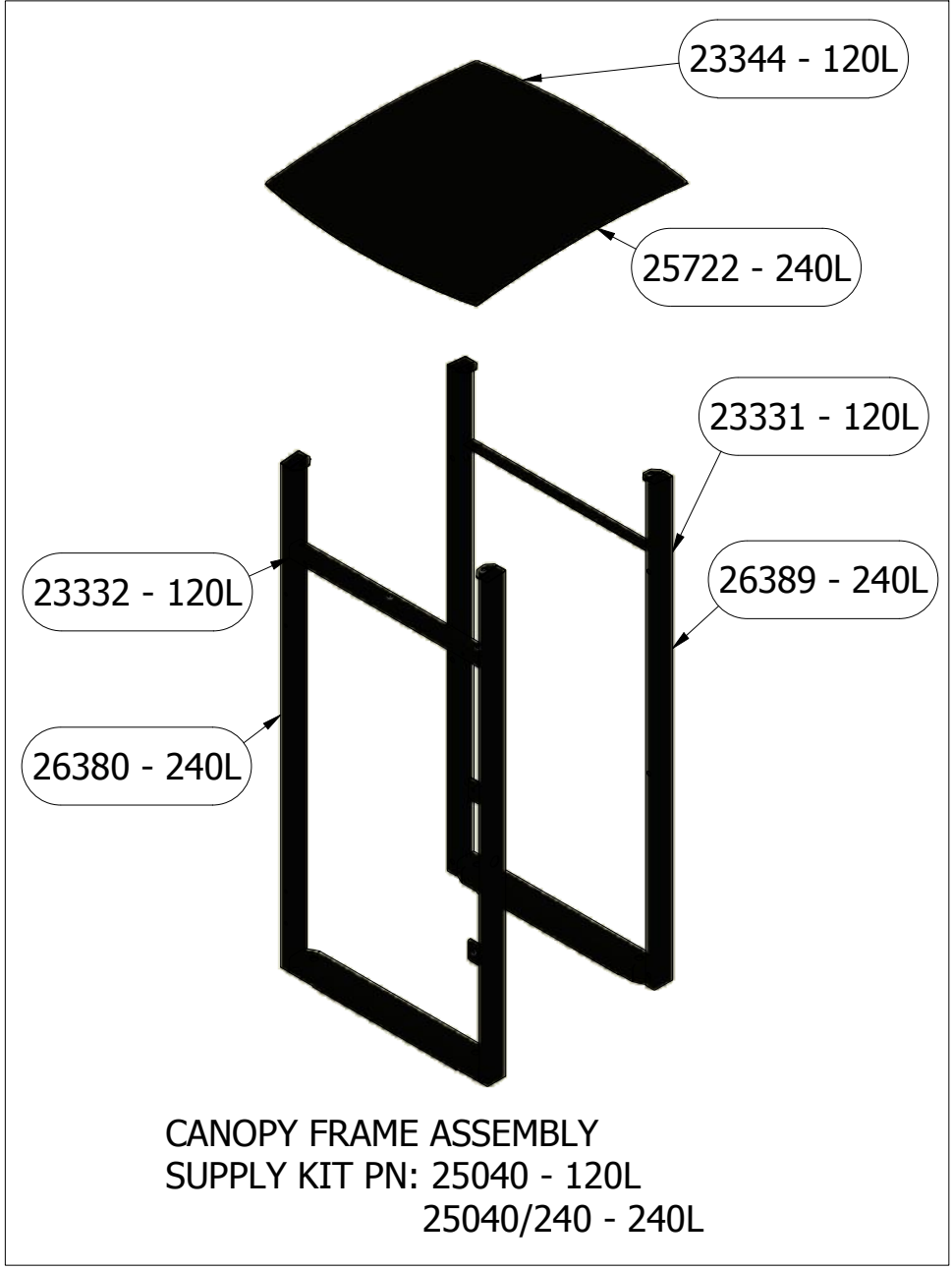
EXAMPLE (AS MODEL SHOWN)

88805/1/RB/S6/PC/S6/PC/DRA

- DESCRIPTION
- SLOPED, FRONT OPENING RUBBISH COVER IN 316SS
 - POWDER COATED ZINC STEEL DOOR AND END PANEL
 - 316SS FRAME
 - POWDER COATED ZINC STEEL SIDE PANEL
 - CUSTOMER = DRAFFIN



GENERAL ASSEMBLY



NOTES:
-PART NUMBERS SHOWN ARE BASE NUMBERS. MODIFICATIONS SHALL BE DERIVED FROM EACH BASE COMPONENT OR ASSEMBLY AND NUMBERED TO INDICATE VARIATION.
E.G. A 23345 SIDE PANEL WITH A LOGO FOR DRAFFIN WOULD BECOME 23345/DRA
-TOP LEVEL PART NUMBER WILL DETERMINE MATERIALS REQUIRED FOR EACH COMPONENT. SPECIFIC FINISHES ARE TO BE NOTED WITHIN THE SALES ORDER.